

Sentinel™ Series Stainless Steel Mounted Bearing Units



What is Sentinel Series?



NTN's Sentinel Series is a premium line of corrosion-resistant products developed for the harsh conditions of the food & beverage industry. With available products ranging from deep groove ball bearings, bearing inserts and mounted units available in numerous combinations of housings, protective covers, grease and sealing options, Sentinel Series provides a family of food & beverage market solutions to improve overall equipment effectiveness, increase production and provide value.

Key product characteristics

- All Sentinel Series stainless mounted units are equipped with solid stainless housings designed with reduced flat surfaces, tumbled smooth, and void of cavities.
- Sentinel Series mounted bearing units are cap capable allowing you to add or remove covers depending on your application needs.
- Sentinel Series insert bearings are filled with FDA H1 food grade grease or NTN's H1 solid polymer lubricant.
- Sentinel Series is designed with food safety and overall equipment effectiveness in mind.

Materials

Inner/Outer Races & Balls

- 440C Stainless Steel

Retainer/Cage

- 302 Stainless Steel

Slinger and Seal

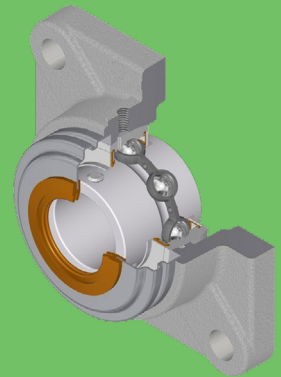
- 302 Stainless Steel
- Silicone Rubber

Stainless Housing & Cover

- 304 Stainless Steel

Greases

- H-1 Food-Grade Grease
- H-1 Solid Lubricant (FG1)



**Please contact your local
NTN Sales Representative
for more details.**

www.ntn.ca



FOOD & BEVERAGE

Stainless Steel Mounted Bearings & Inserts

Sentinel Series All Stainless Mounted Bearing Units

- Maximum load carrying capacity to corrosion protection
- Solid cross-section and cavity free with a tumbled smooth finish
- Open and Closed Covers optional on all mounted units

Size Range from 201 to 212

- Inch = 1/2" up to 2-7/16" bore
- Metric = 12mm to 60mm



Material	Insert Type	Housing	Size	Bore Diameter	Suffix	Grease
S	UC	PA	208	24	CC	FG1

1. MATERIAL

- S: Stainless steel
- Z: Clear zinc chromate

2. INSERT TYPE

- UC: Wide inner ring, set screw type w/ slinger

3. HOUSING

Stainless Steel

- P: Pillow block
- PA: Tapped-base pillow block
- FL: Two-bolt flange
- FB: Three-bolt bracket flange
- F: Four-bolt flange
- T: Take up unit

4. SIZE

- 2xx: Basic size

5. BORE DIAMETER

- XX: Bore diameter in 16ths of an inch (ex: 24/16 = 1.5")

6. SUFFIX

- CC: Closed cover †
- CO: Open cover †
- Blank: No cover
- † - 1 additional open cover included for pillow blocks

7. GREASE

- Blank: Food-grade grease
- FG1: Food-grade solid lube



FOOD & BEVERAGE

